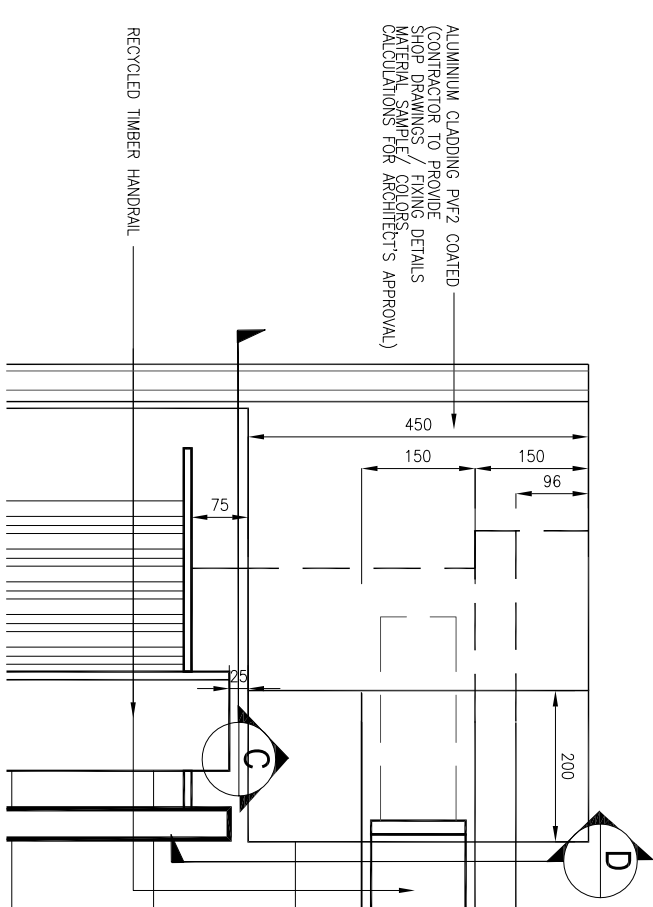
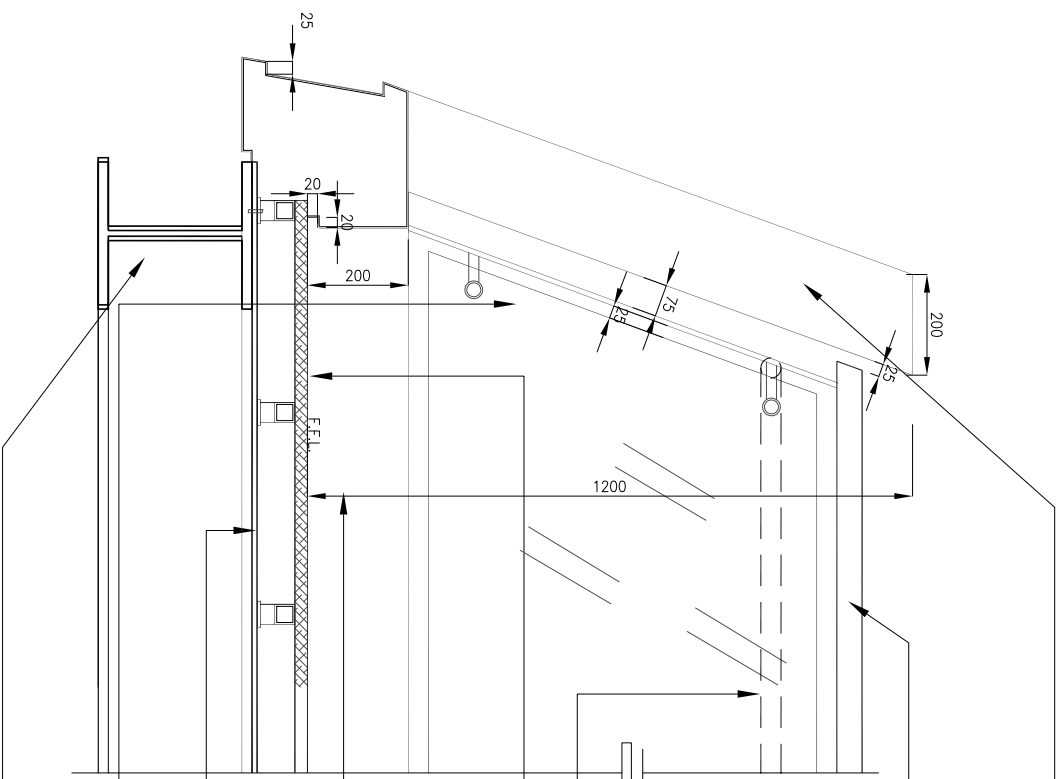


**A** RAILING AND LINK BRIDGE DETAIL 3  
REFERENCE PLAN  
N.T.S.



**B** RAILING AND LINK BRIDGE DETAIL 3  
BLOW-UP PLAN  
SCALE 1:10



**C** RAILING AND LINK BRIDGE DETAIL 3  
SECTION  
SCALE 1:15

ALUMINIUM CLADDING PVF2 COATED  
(CONTRACTOR TO PROVIDE SHOP DRAWINGS / FIXING DETAILS MATERIAL SAMPLE / COLORS. CALCULATIONS FOR ARCHITECT'S APPROVAL)

RECYCLED TIMBER HANDRAIL  
REFER TO RP-02

100mm Ø STAINLESS STEEL INTERMEDIATE RIBS  
SATIN FINISH GRADE 316

75x100mm THK. PROFILED STAINLESS STEEL SATIN FINISHED (GRADE 316)

20mm Ø STAINLESS STEEL RIBS  
SATIN FIN. GRADE 316

LINE OF 40mm. Ø S.S. HANDRAIL

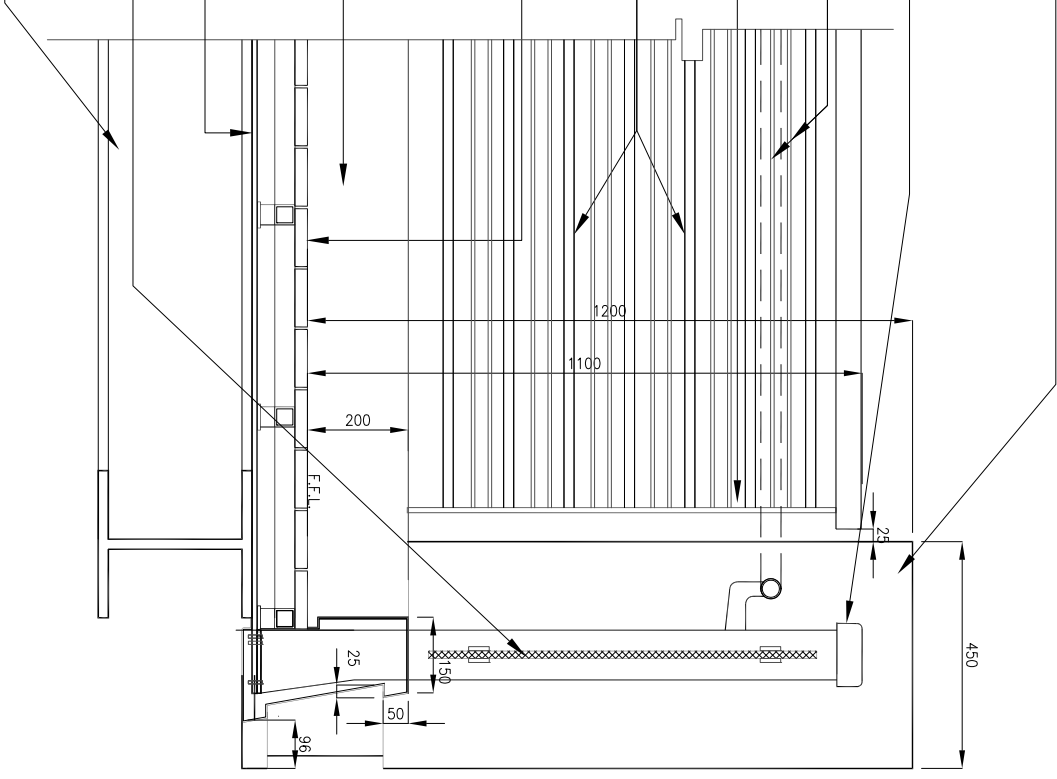
RECYCLED TIMBER DECK  
WITH GMS FRAMES REFER TO RP-01  
(CONTRACTOR TO PROVIDE SHOP DRAWINGS / FIXING DETAILS MATERIAL SAMPLE / COLORS. CALCULATIONS FOR ARCHITECT'S APPROVAL)

ALUMINIUM CLADDING WITH REMOVABLE ACCESS PANEL (CONTRACTOR TO PROVIDE SHOP DRAWINGS / FIXING DETAILS FOR APPROVAL)

EXPANDED METAL MESH  
FIXED TO GMS FRAME  
CONTRACTOR TO SUBMIT SAMPLE FOR ARCHITECT'S APPROVAL

15mm THK. CLEAR TEMPERED GLASS BALUSTRADE (CONTRACTOR TO PROVIDE SHOP DRAWINGS / FIXING DETAILS MATERIAL SAMPLE / COLORS. CALCULATIONS FOR ARCHITECT'S APPROVAL)

EXPOSED GMS FRAME PAINTED. CONTRACTOR TO SUBMIT COLOR CHART FOR ARCHITECT'S SELECTION



**D** RAILING AND LINK BRIDGE DETAIL 3  
SECTION  
SCALE 1:15

**NOTE:**

- FACTOR TO LOCATE EXPANSION JOINT @ MAX. 15.95M LINEAR AREA & TO BE APPROVED BY ARCHITECT / STRUCTURAL ENGR.
- ALL SCREENING WATERPROOFING STRUCTURAL SLAB SHOULD REFER TO ARCHITECT'S STRUCTURAL ENGR. SPECS. / MATERIALS LIST.
- FINISH POINTS CALCULATIONS & EXACT LOCATIONS OF SUBSOIL DRAINS SHOULD REFER TO DRAINAGE CONSULTANTS DRAWINGS.
- PLANTING SOIL & PLANTING MATERIALS INCLUDING PROPER FERTILIZER SHOULD BE SUBMITTED AND APPROVED BY THE CONTRACTOR TO PROVIDE SHOP DRAWINGS. ESPECIALLY THE LEVELS AMONG SOIL SURFACES, DRAINAGE INSPECTION CHANNELS, PLANTING PLANTING AREA, BUILDING SERVICES WITHIN THE PLANTING AREA.
- CONTRACTOR TO PROVIDE SHOP DRAWINGS, FINING DETAILS, MATERIAL SAMPLES AND STRUCTURAL CALCULATIONS FOR ARCHITECT'S APPROVAL.

No.	Date	Description	Initial
Revision			
Consultant Project No. 080101			

**ARTHUR C. S. KWOK**  
ARCHITECTS & ASSOCIATES LIMITED  
郭志輝建築師有限公司  
1401 ANTOLE CENTRE ONE KOWLOON

**TEAM 73 HK Limited**  
Urban design Urban planning Landscape architecture  
香港城市規劃師有限公司  
16/F, 633 METRO, 9800, QUEEN ROUTE, HONG KONG  
Tel: 3460-2113 Fax: 3460-4400 Email: team73@team73.com  
C. Tel: 3460-2113 Fax: 3460-4400 Email: team73@team73.com

**GANNETT CONSULTANTS LIMITED**  
GANNETT CONSULTANTS LIMITED  
16/F, 633 METRO, 9800, QUEEN ROUTE, HONG KONG  
Tel: 3460-2113 Fax: 3460-4400 Email: team73@team73.com  
C. Tel: 3460-2113 Fax: 3460-4400 Email: team73@team73.com

Name	Signed	Date
Designed	KH	02 DEC 2011
Drawn	RL	02 DEC 2011
Checked	KH	02 DEC 2011
Approved	SF	02 DEC 2011

Contract No.

File No.

Project No. 420 RO

Contract Agreement No. 9AS022

Contract LOCAL OPEN SPACE AT CHUNG YEE STREET, KOWLOON CITY DISTRICT

Drawing Title RAILING AND LINK BRIDGE DETAIL 3

Drawing No. AB/2263/EW129

Scale AS SHOWN  
13 JUN 2012  
(Date)

