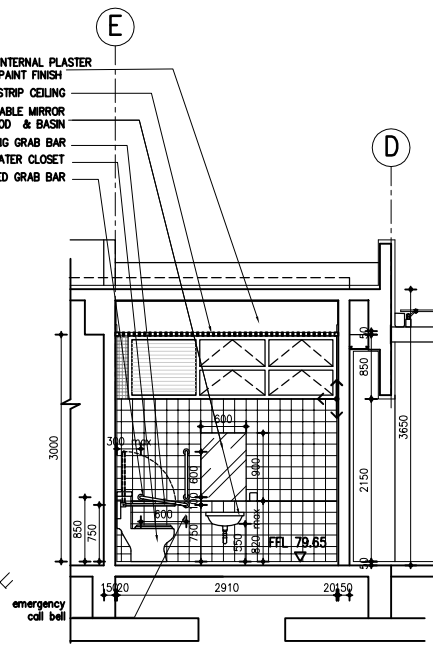
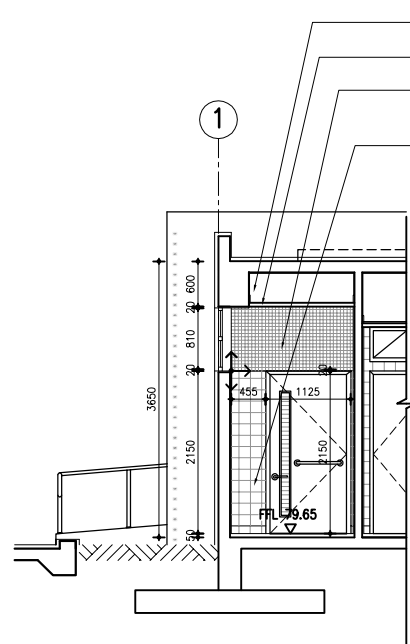


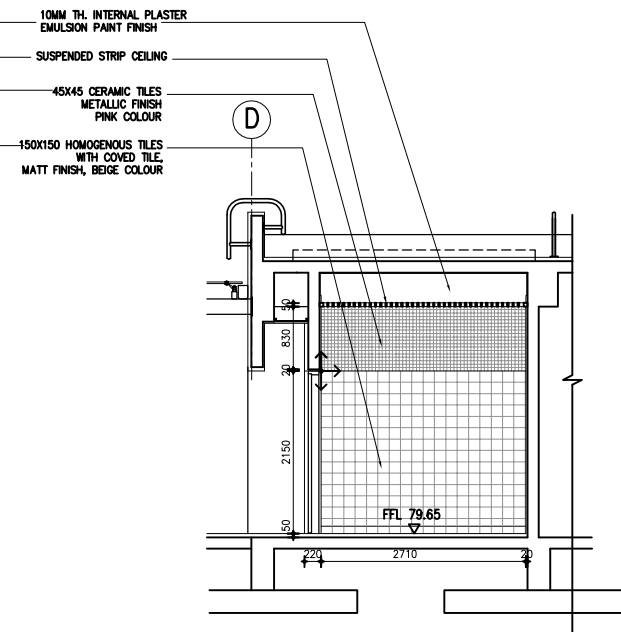
ELEVATION 21



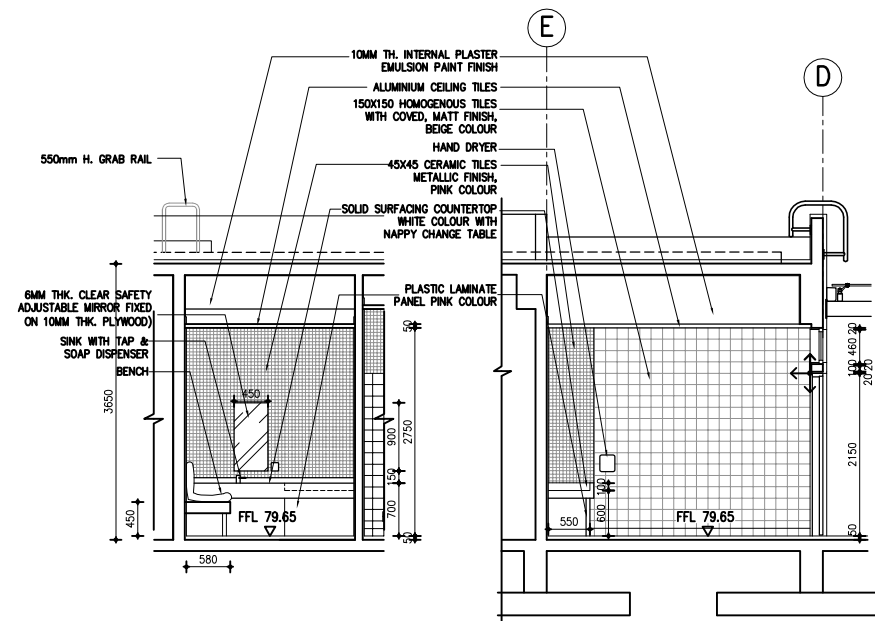
ELEVATION 22



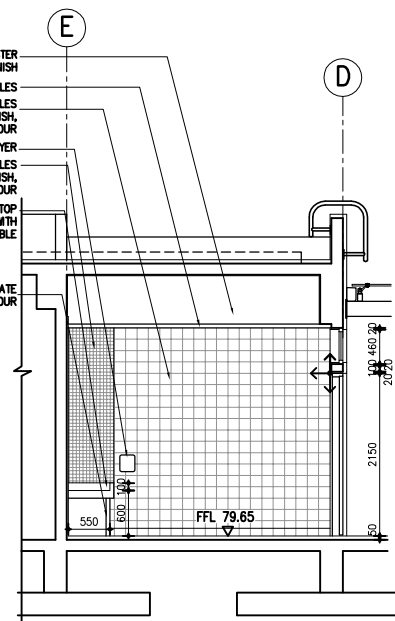
ELEVATION 23



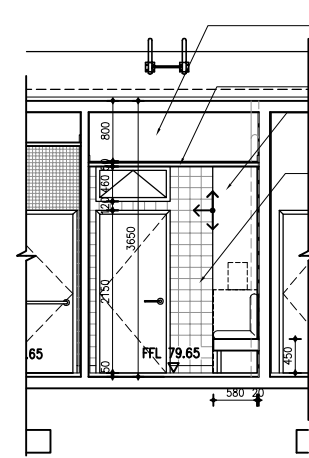
ELEVATION 24



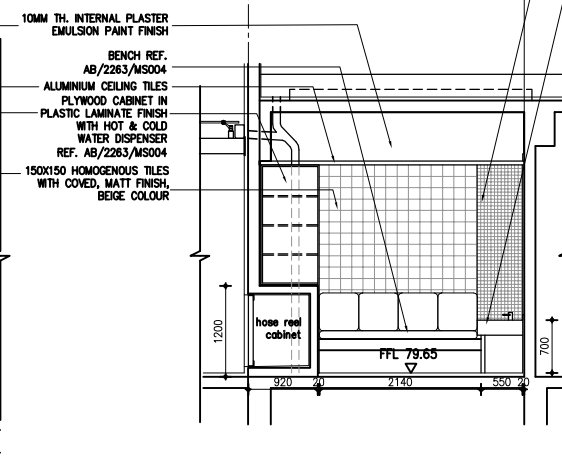
ELEVATION 25



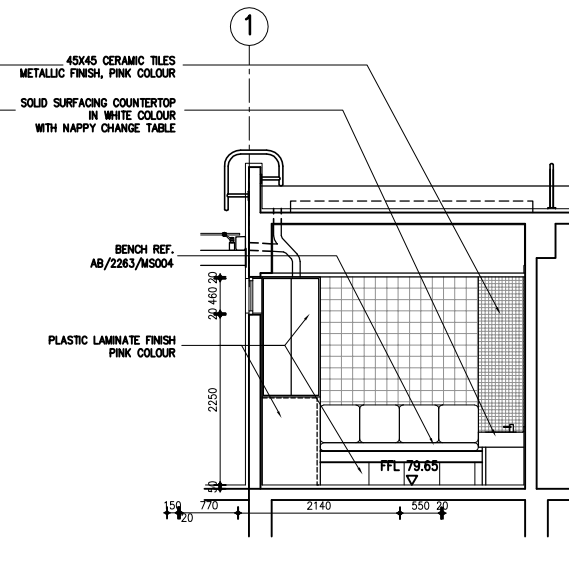
ELEVATION 26



ELEVATION 27



ELEVATION 28



ELEVATION 29

ELEVATIONS OF DISABLED LAVATORY & BABY CARE ROOM SCALE A1=1:50, A3=1:100

Notes :

- CONTRACTOR HAS TO SUBMIT SHOP DRAWINGS OF FALL ARREST SYSTEM, SKYLIGHT, 35x88mm RECYCLED PLASTIC SCREEN, ALUMINIUM WINDOW LOUVER, METAL GATE AND ROLLER SHUTTER WITH STRUCTURAL CALCULATION, SAMPLE AND COLOUR CHART FOR ARCHITECT'S APPROVAL BEFORE FABRICATION AND INSTALLATION.
- WALL FINISHES WILL BE APPLIED 100mm ABOVE SUSPENDED CEILING LEVEL
- RECYCLED PLASTIC SCREEN DOWN TO 50mm ABOVE SOIL TOP LEVEL
- EXTERNAL ARTIFICIAL GRANITE TILES TO BE ONE TILE BELOW SOIL TOP LEVEL

↔ SETTING-OUT POINT

| No. | Date | Description | Initial |
|----------|------|-------------|---------|
| Revision | | | |

Consultant Project No. 080101

ARTHUR C. S. KWOK
ARCHITECTS & ASSOCIATES LIMITED
郭克輝建築師有限公司
1401 ARGYLE CENTRE ONE KOWLOON

TEAM 73 HK Limited
urban design urban planning landscape architecture
4/F Cheong Hong Kong Tower & Hennessy Road, Hong Kong
Tel: 2885-8713 Fax: 2885-4829 Email: oug@team73.com

CANWEST CONSULTANTS LIMITED
CIVIL & STRUCTURAL ENGINEERS
建築工程師有限公司
18/F, 433 HONG KONG ROAD, NORTH POINT, HONG KONG
TEL: (852) 2885 1128
FAX: (852) 2881 4346
E-MAIL: canwest@canwest.com.hk

THOMAS ANDERSON & PARTNERS (H.K.) LIMITED
CONSULTING ENGINEERS, BUILDING SERVICES
湯瑪士(香港)有限公司

| | Name | Signed | Date |
|----------|-------|--------------|----------|
| Designed | PT/EL | <i>PT/EL</i> | DEC 2011 |
| Drawn | WS | <i>WS</i> | DEC 2011 |
| Checked | TH | <i>TH</i> | DEC 2011 |
| Approved | AL | <i>AL</i> | DEC 2011 |

Contract No. SS T320

File No.

Project No. 420 R0

Consultant Agreement No. 9AS022

Contract LOCAL OPEN SPACE AT CHUNG YEE STREET, KOWLOON CITY DISTRICT

Drawing Title SERVICE BLOCK DETAILS 5/6 (ELEVATION OF DISABLE LAV. & BABY CARE ROOM)

Drawing No. AB/2263/DL006 Scale AS SHOWN

(Date)

ARCHITECTURAL SERVICES DEPARTMENT